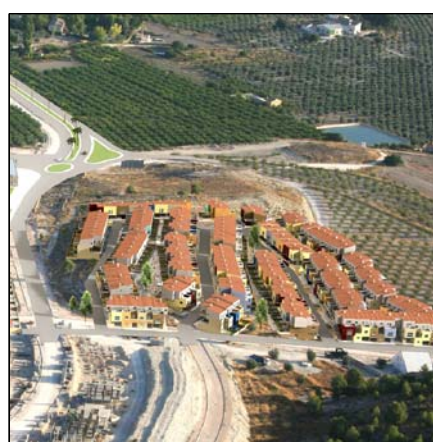
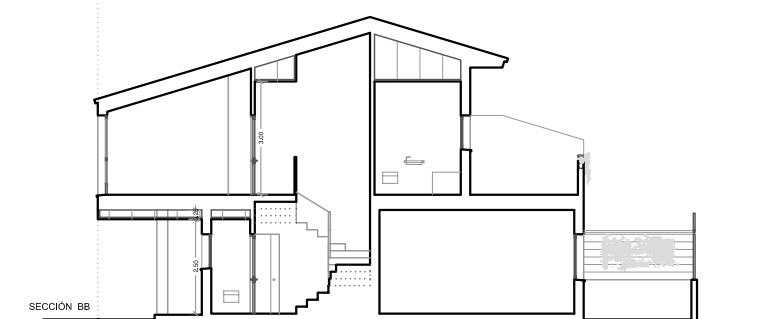
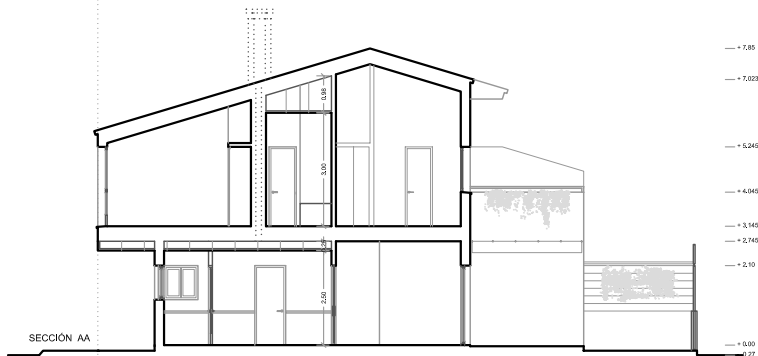
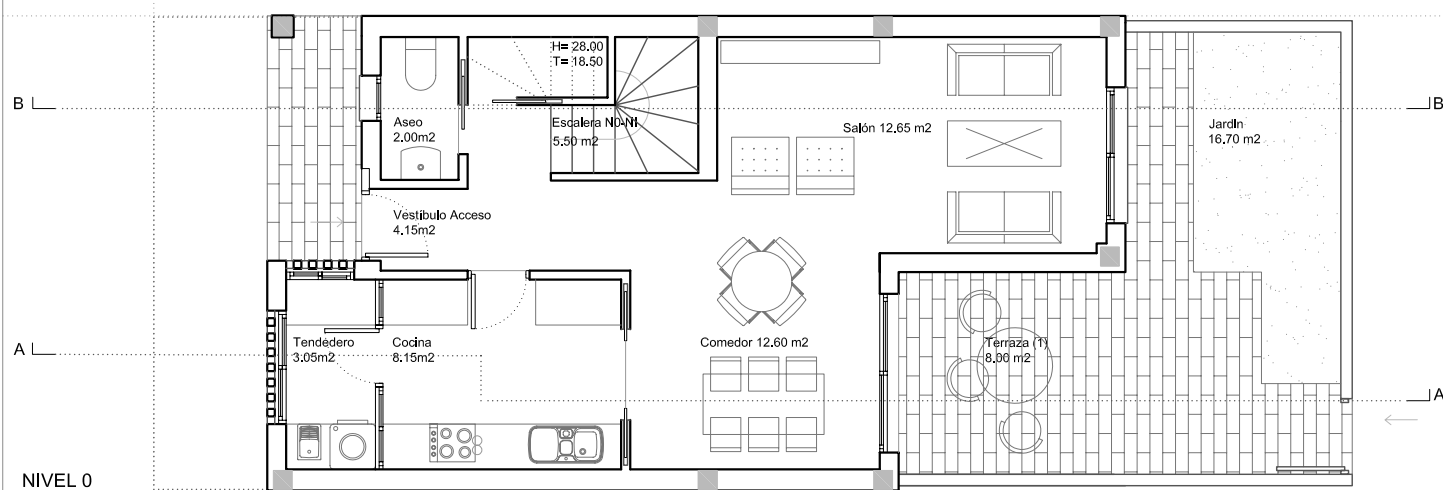
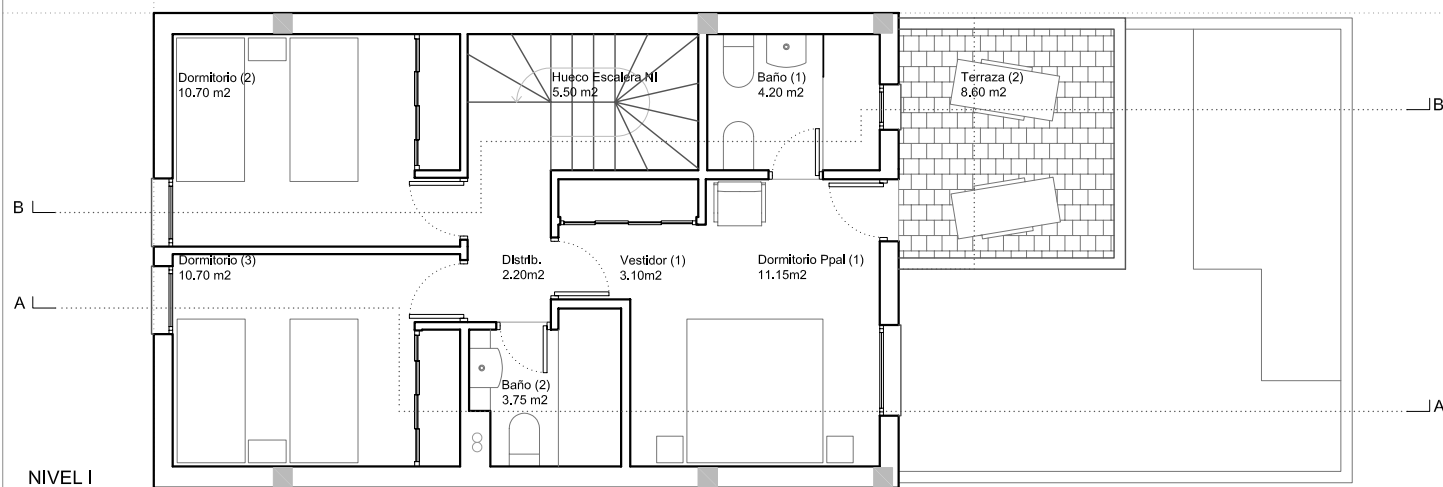


1:100



| ND           | Tipo 3D             | Sup Util M2  | Sup Cons. M2  |
|--------------|---------------------|--------------|---------------|
| 1            | Vestibulo Acceso    | 4.15         |               |
| 2            | Cocina              | 8.15         |               |
| 3            | Tendedero           | 3.05         |               |
| 4            | Guardarropa         | 1.50         |               |
| 5            | Salón               | 12.65        |               |
| 6            | Comedor             | 12.60        |               |
| 7            | Aseo                | 2.00         |               |
| 8            | Distribuidor        | 2.20         |               |
| 9            | Dormitorio Ppal (1) | 11.15        |               |
| 10           | Vestidor (1)        | 3.10         |               |
| 11           | Baño (1)            | 4.20         |               |
| 12           | Dormitorio (2)      | 10.70        |               |
| 13           | Vestidor (2)        | -            |               |
| 14           | Baño (2)            | 3.75         |               |
| 15           | Dormitorio (3)      | 10.70        |               |
| 16           | Vestidor (3)        | -            |               |
| 17           | Aseo (3)            | -            |               |
| 18           | Dormitorio (4)      | -            |               |
| 19           | Distribuidor        | -            |               |
| 20           | Aseo (2)            | -            |               |
| 21           | Escalera N-I - N0   | -            |               |
| 22           | Escalera N0-NI      | 5.50         |               |
| 23           | Hueco Escalera NII  | -            | -4.00         |
|              |                     | 95.40        | -             |
|              |                     | Sup Util M2  | Sup Cons. M2  |
| 24           | Patio/Jardín        | - 16.70      | -             |
| 25           | Terraza (1)         | - 8.00       | -             |
| 26           | Terraza (2)         | - 8.60       | -             |
| 27           | Terraza (3)         | - -          | -             |
| 28           | Porche Acceso       | - -          | -             |
| 29           | Garaje              | VAR          | -             |
|              |                     | - 33.30      | -             |
| <b>Total</b> |                     | <b>95.40</b> | <b>128.70</b> |
|              |                     |              | <b>123.90</b> |